

2nd ERA-Net CRUE Research Funding Initiative

Integrative flood risk governance approach for improvement of risk awareness and increased public participation - IMRA

TU Dortmund University, IRPUD (D)

Wupperverband (associated) (D)

Umweltbundesamt GmbH (A)

Amt der Kärntner Landesregierung, Wasserwirtschaft (A)

Consiglio Nazionale delle Ricerche, IRPPS (I)

Autorità di Bacino Fiume Tevere (I)

T6 Società Cooperativa (I)

Stefan Greiving (Co-ordinator)

Bernd Wille

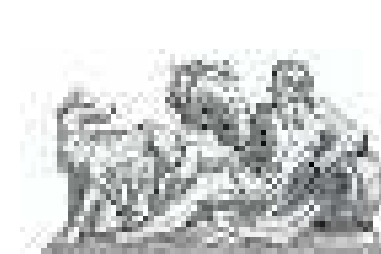
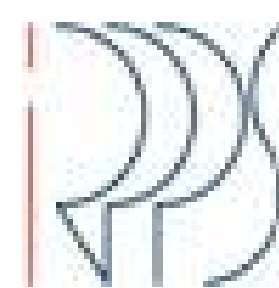
Therese Stickler

Norbert Sereinig

Fernando Ferri

Carlo Ferranti

Katja Firus



Autorità di Bacino
del Fiume Tevere



WUPPERVERBAND
für Wasser, Mensch und Umwelt

Abstract

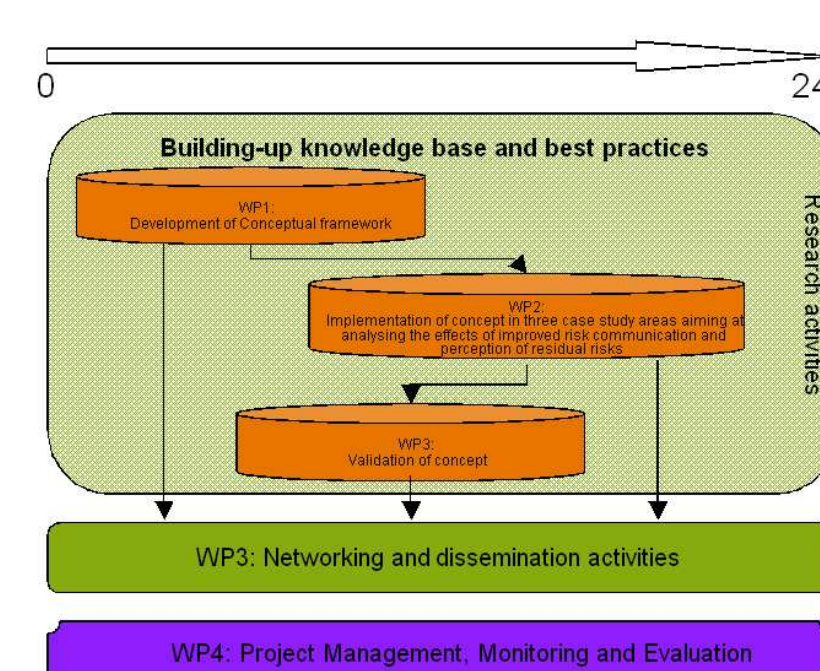
The overarching goal of the IMRA project is to influence and change risk perception and real decision-making in three case study areas of three different river basin districts in Europe by actively involving stakeholders and the public. The whole process of assessing and managing flood risks will be reorganised by following the IMRA risk governance concept for participatory flood risk management aiming at the improvement of risk awareness and increased public participation to be developed at the beginning of the project. A practical handbook on the step-by-step implementation of the IMRA concept will be the second main result of the project. In order to prove the conceptual framework, three river basin districts will be integrated into the project as case studies.

Objectives and methodology

- Building up the knowledge base by the development of a methodology for an integrative concept for participatory flood risk management.
- Develop indicators to evaluate the performance of a public participation process.
- Application in three flood risk management settings in three different cultures and types of river basins (case studies).
- Validation of the concept on the basis of the experiences in the case studies and its final release.
- Discussion of concept and case studies of Step 1 with scientific experts and dissemination to policy and decision-makers at various levels as well as to all interested actors and a wider public.
- Project management activities (management, monitoring and evaluation) to ensure a smooth running of the project.

Work packages

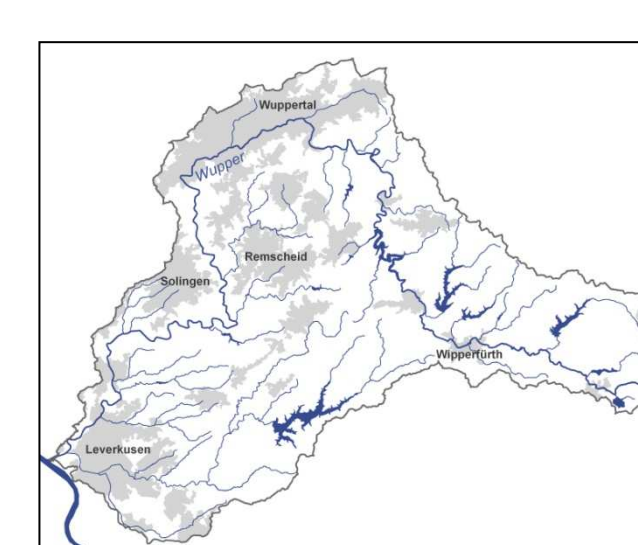
- Building-up knowledge (WP 1-3)
- Networking / dissemination (WP4)
- Project management (WP5)



Case studies

River Wupper (D)

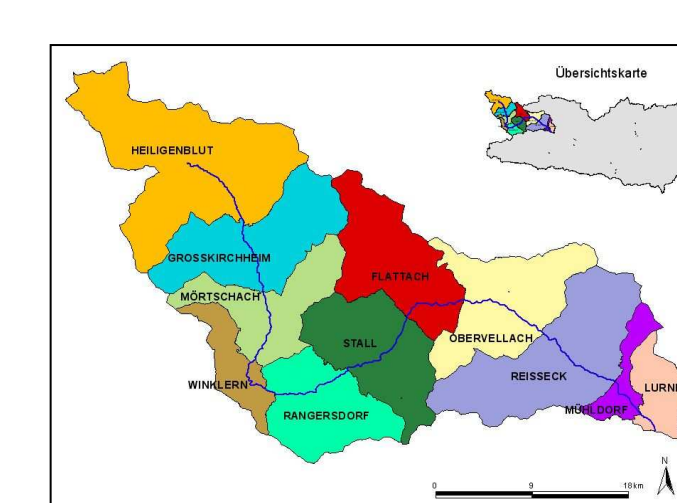
- Catchment area: 813 km²
- Location: North Rhine-Westphalia, Germany, east of Düsseldorf and Cologne
- Tributary of the Rhine
- The riverbed lies on a sea level between 441 m and 34 m



River Wupper catchment area

River Möll (A)

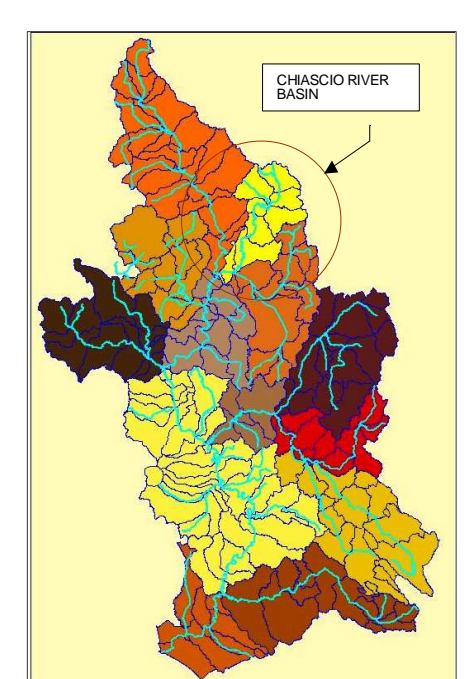
- Catchment area: 1.105 km²
- Location: northwest of Carinthia and a small part of East Tyrol
- Tributary of the Drau
- The riverbed lies on a sea level between 1.290 m and 550 m



Location of the municipalities of the case study region in Carinthia

River Chiascio (I)

- Catchment area: 727 km²
- Location: Apennine ridges
- Tributary of the Tiber
- The river originates at an altitude of 850 m above sea level and after 95 km it flows into the Tevere river



Location of the Chiascio case study area in the Tevere river basin